

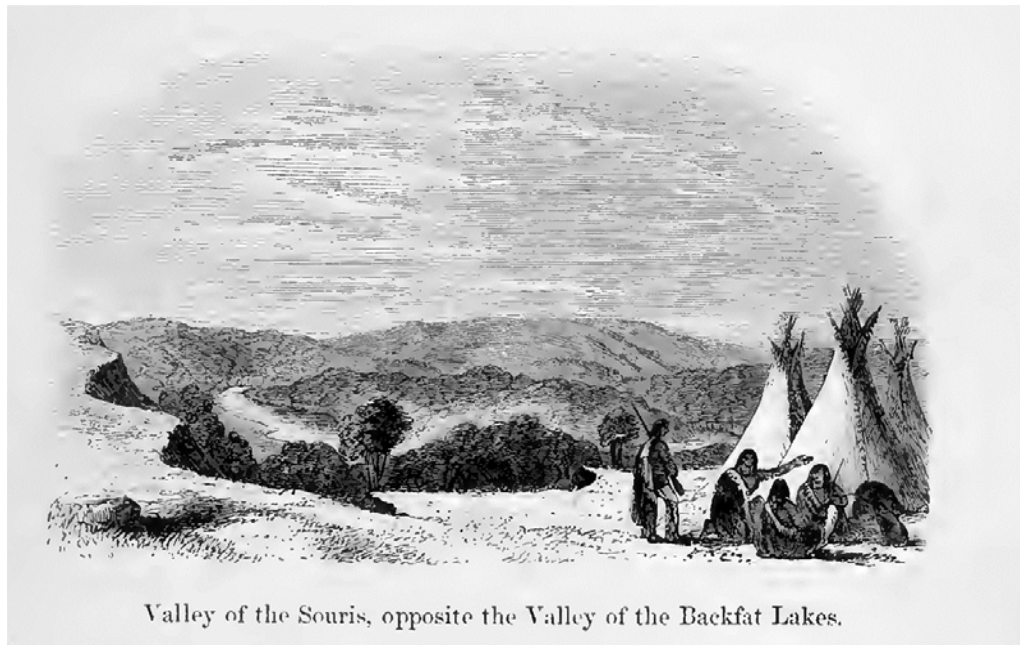
**ORIGINAL ARTWORK OF THE
CANADIAN RED RIVER, ASSINIBOINE AND SASKATCHEWAN EXPEDITIONS**

As Published In Two Volumes

By Henry Youle Hind, 1860, London, England

John Fleming was born in 1836 in Kirkcaldy, Fifeshire, Scotland and came to Canada as a youth. He was employed as a Provincial Land Surveyor when invited to accompany Professor Henry Youle Hind on his Canadian Red River, Assiniboine and Saskatchewan Exploring Expeditions of 1857-58, sent to assess the settlement potentials of the Hudson's Bay Company Rupertsland territories. The British government sent a concurrent but separate exploring expedition of its own from 1857-60, headed by Cpt. Palliser. As the Hind Expedition's "Assistant Surveyor and Draughtsman" Fleming's responsibilities included making sketches to be utilized by Hind in his final report.

All of the woodcut and colour 'chromo-xylograph' illustrations appearing in Hind's two volume final report were etched copies of John Fleming's original sketch and watercolour artwork. Publishers during this period required etched plates to make book illustrations, and after being copied, Flemings original artwork was sold into private hands and therefore was largely unseen and unknown to Manitoba historians. Fortunately, many of the Fleming's original Canadian Expedition sketches were bequeathed to the Toronto Public Library, by J. Ross Robertson and this collection was recently digitized and made available online as public domain materials. Consequently, the BTNHR is able to make available for viewing a selection of these previously rarely seen images.



Woodcut - example

Chromoxylograph - example

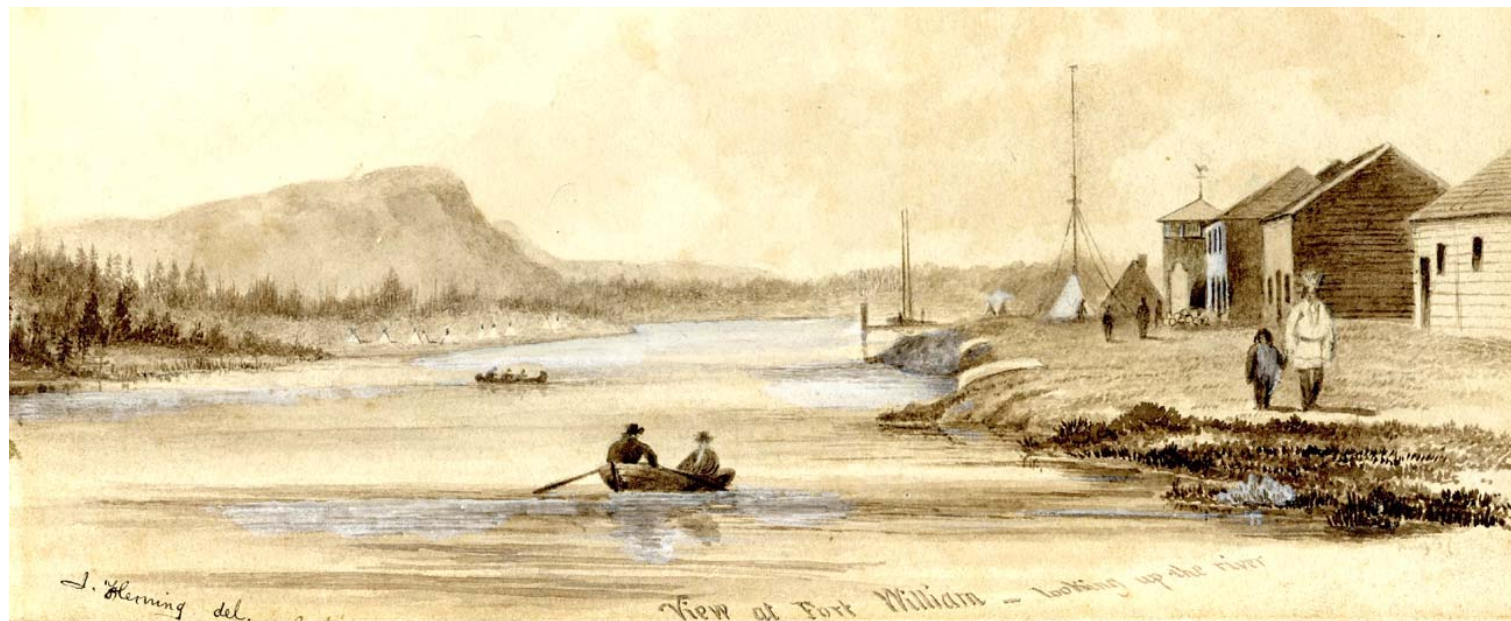




Sketch No.1: Steamer Collingwood on a Rock near Michipicoten Island, Lake Superior. 1857.



Fort William, from south side of Kaministiquia River.



Fort William looking up the river. 1858.



Decharge des Paresseux, Kaministiquia River. 1857.



Kaministiquia River, Beginning of Great Dog Portage. 1857.



Second Falls, Kaministiquia River. 1857.



Falls at 3rd Portage above Kakabeka, 1857



Entrance to Little Dog Lake. August, 1857.



Fort France, Rainy River, 1858



HBC Post at Rat River, Winnipeg River. (Kenora), 1858



Slave Falls, Winnipeg River



Islington Mission, Winnipeg River



Fort Alexander, mouth of Winnipeg River. 1858



Lower Fort Garry, or Stone Fort, Red River



Interior of Lower Fort Garry, or Stone Fort, Red River



Upper Fort Garry, Assiniboine River. September 1857.



Fort Garry – Rear View, September 1857



The Nunnery at Red River, 1857.



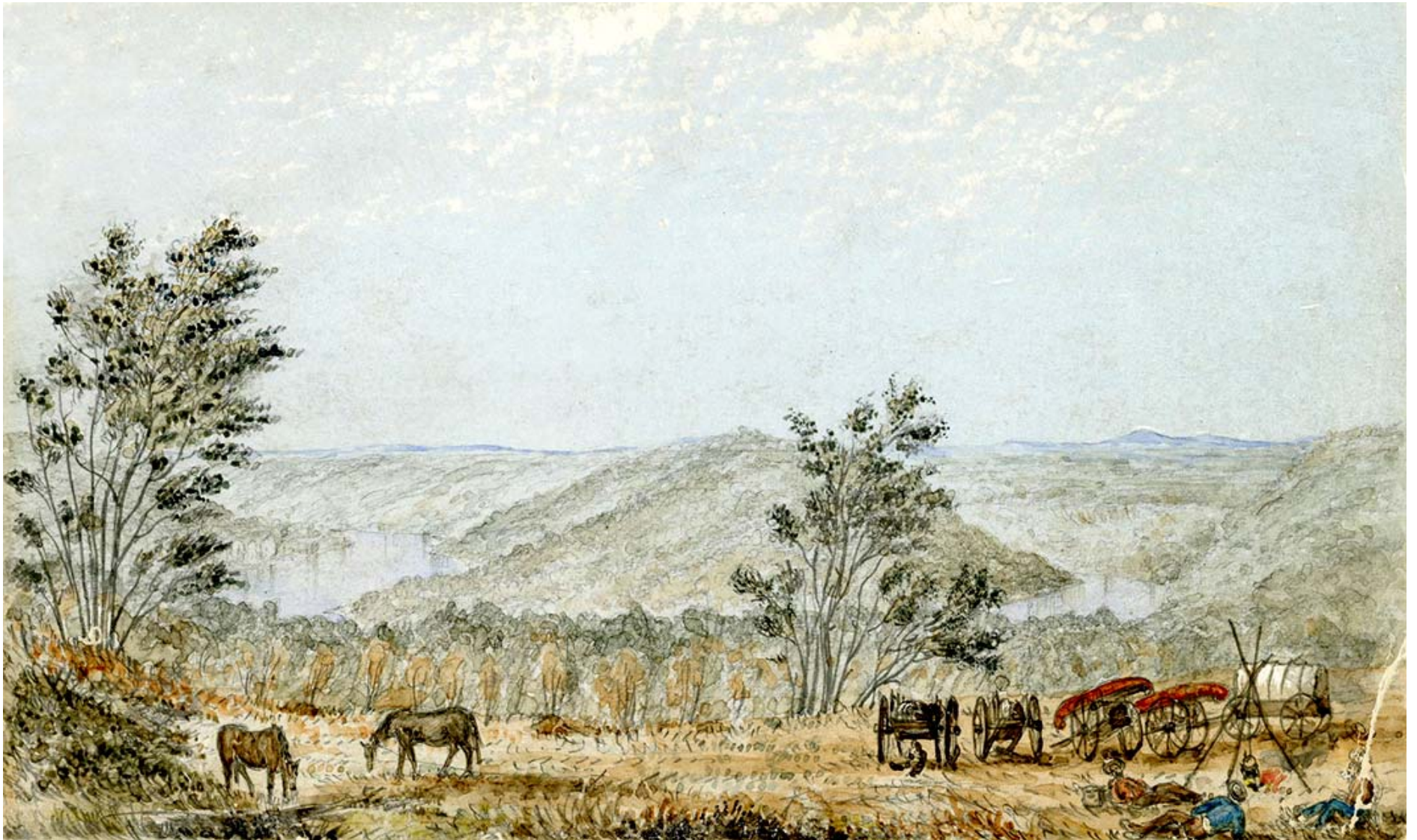
St. John's Church and College, Red River Settlement, Sept. 1857



Indian Hunters' Tents - in rear of Fort Garry



Prairie Portage, Assiniboine River



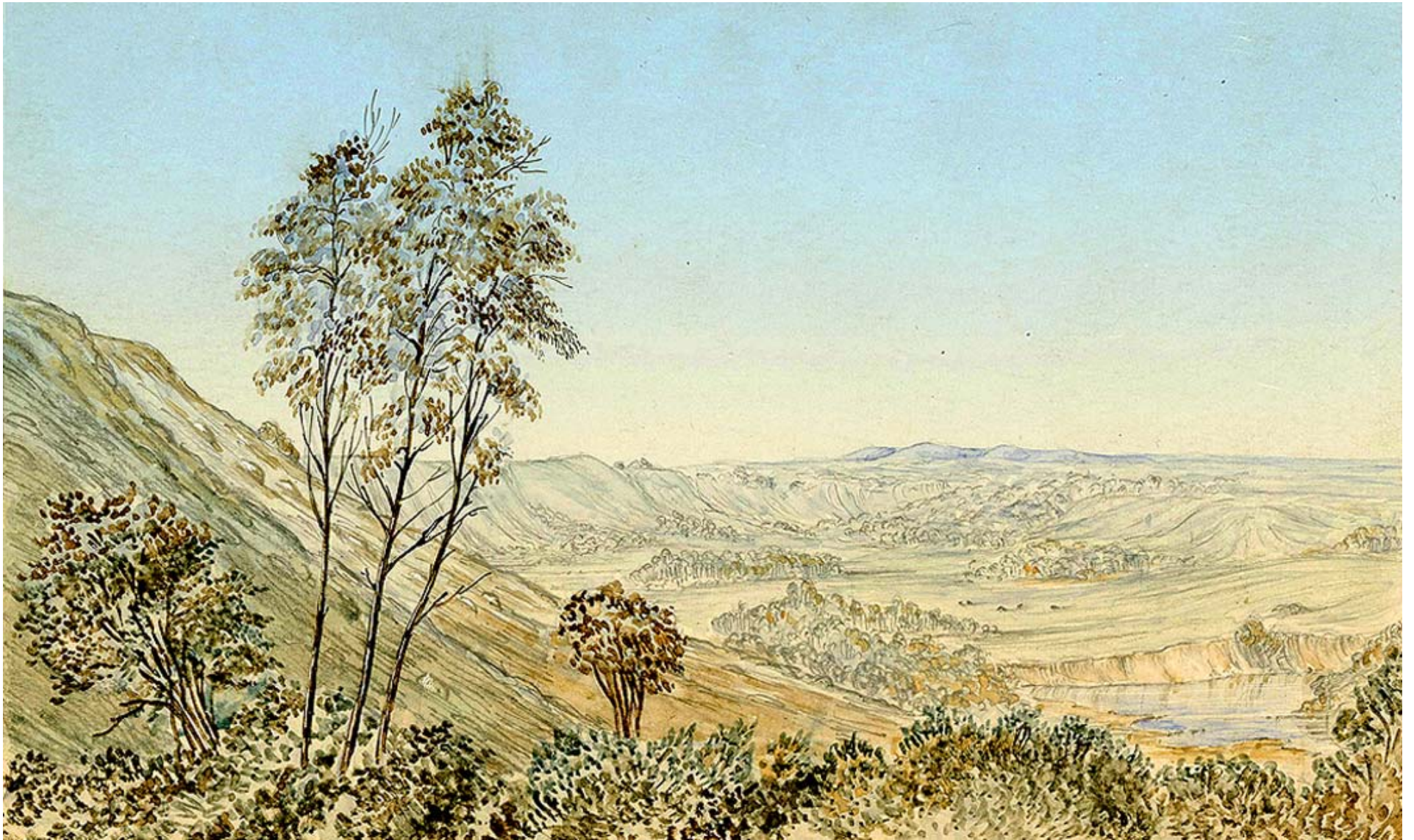
Half-Way Bank, Assiniboine River, June 20, 1858



Confluence of the Little Souris and Assiniboine, June 24, 1858



Valley of the Souris, near the Blue Hills of the Souris, June 26, 1858



Valley of the Souris, looking towards the Blue Hills of the Souris, June 27, 1858



Valley of the Souris, opposite the Valley of the Back Fat Lakes, June 28, 1858.



Pembina River Confluence with the Red.



Fort Ellice, Beaver Creek. July 11, 1858.



Skin Tents (Cree); Birch Bark Tents (Ojibway). 1858



Plain Crees driving Buffalo into a Pound near the Elbow of the South Branch of the Saskatchewan, July 1858.



Sioux Dress, 1857

Images courtesy of
the Toronto Public Library
John Robertson Collection

www.torontopubliclibrary.ca/John+Robertson+Collection

Rights and Licenses

Public Domain